

GPS Locator

Real-time GPS mapping solution for Smallworld.

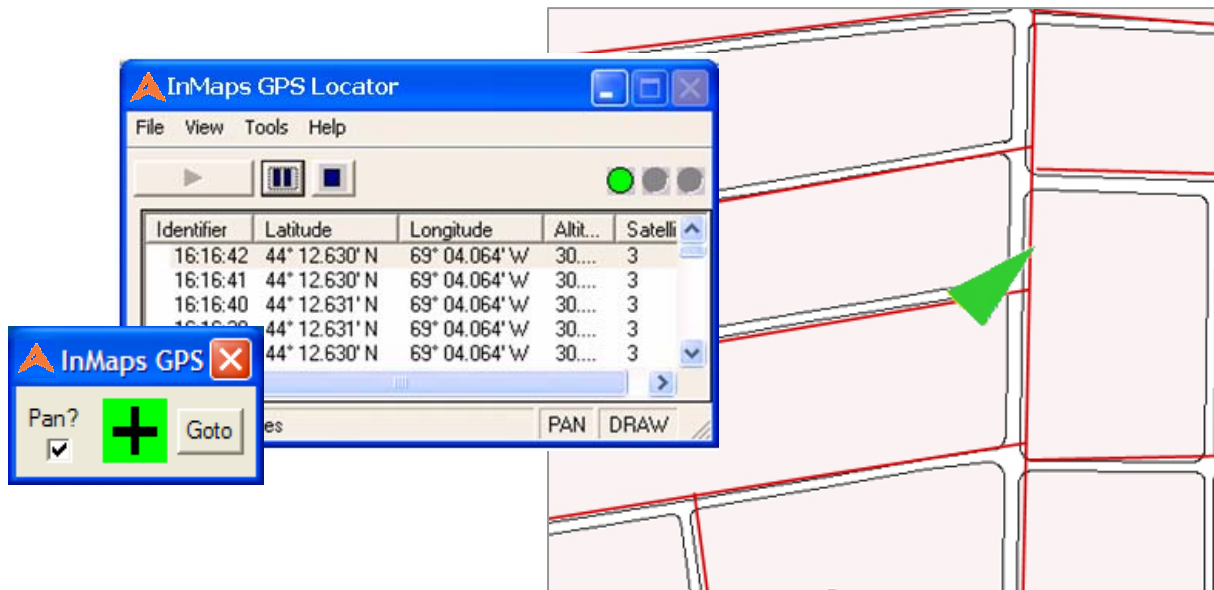
*“Give mobile crews the ability to view the data they need...
 ... when they need it.”*

GPS Locator provides a real-time GPS mapping solution for Smallworld. It enables mobile crews to pinpoint the location of their facilities in their GIS in relation to where they are, in real time, using GPS technology. Natural gas and electric utilities have found that GPS Locator in the field has equipped mobile crews with what they need when they need it. The ability to view facility data (pipes, poles, wires, etc.) is invaluable, particularly in emergency situations. GPS Locator also reduces reliance on dispatchers and, in the case of electric utilities, the number of Customer Minutes Interrupted (CMI).

With version 2.0, the GPS Locator interface has been extended to share location information with other applications. This added benefit allows you to integrate GPS data with your other field applications.

With GPS Locator you can:

- View your current location in Smallworld
- Get instant feedback about your current location, including latitude, longitude, and altitude
- Use the auto-pan feature to keep the Smallworld graphics window positioned to your current location



For more information, please email info@inmaps.com or call (603) 968-3670.



Authorized Partner
 GE Energy

About InMaps

InMaps provides geospatial consulting services for natural gas and electric utilities, with special emphasis in Smallworld systems. Consulting services include application development, technology upgrades, PowerOn® support, system integration, compliance reporting, training, and on-site services. Products include GPS Locator and Dimension Toolkit. Field solutions include Automated Driving Survey, for the natural gas industry, and Mobile GIS, which gets Smallworld into the field. InMaps is a GE Energy Value Added Reseller.



www.inmaps.com